

Bee bingo

How many of these bees can you spot over the summer?



White-tailed bumblebee
Yellow and black bands and white tail



Honey bee
Long, slim bee that makes honey



Red-tailed bumblebee (female)
Black body and orange-red tail



Red-tailed bumblebee (male)
Yellow ruff around face, black body and red tail



Common carder bee
Mainly brown or ginger body but shade can vary according to location



Tree bumblebee
Ginger thorax, black abdomen and white tail



Hairy-footed flower bee (female)
Jet-black body and orange back legs



Leafcutter bee
Look like a honey bee but cuts neat semi-circles from leaves



Ashy mining bee
Black body with ashy bands across the thorax

Bonus points – Look out for these other pollinators



Wasp

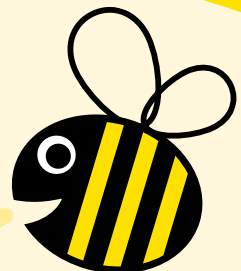


Hoverfly



Bee fly

Join Britain's biggest
bee survey and have fun
getting to know bees.



Did you know there's around 250 bee species in Great Britain? Most of these are solitary bees and bumblebees, but we also have one species of honey bee.

They may be tiny but bees are essential for a healthy environment and healthy economy. But right now, our bees are in trouble. Since 1900, the UK has lost 20 species of bee, and a further 35 are at risk.

Join the Great British Bee Count to get to know our brilliant bees better, and find out how to get Britain buzzing again with bee-friendly plants in our gardens, streets and communities.

www.greatbritishbeecount.co.uk
#greatbritishbeecount

Download the app now
Search 'Great British Bee Count'

