

# Bee spotter guide



There are around 250 species of bee in the UK. Here are just a handful that you may spot in your garden.



**Buff-tailed bumblebee**  
*Bombus terrestris*

- Dirty white tail
- Collects pollen from many plants



**Garden bumblebee**  
*Bombus hortorum*

- Tends to visit long, tubular flowers due to its long tongue



**White-tailed bumblebee**  
*Bombus lucorum*

- Lemon-yellow coloured bands
- Seen as early as February



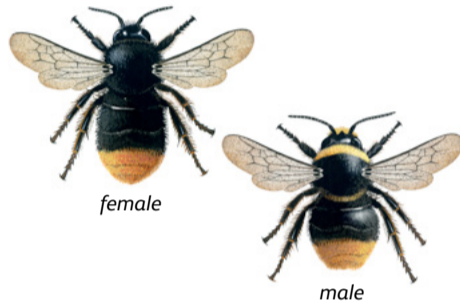
**Honey bee**  
*Apis mellifera*

- Works with others from the hive to make honey
- Long, slim body



**Early bumblebee**  
*Bombus pratorum*

- Small and fluffy
- Orange tail



**Red-tailed bumblebee**  
*Bombus lapidarius*

- Jet-black body and red tail
- Males have yellow ruff around face



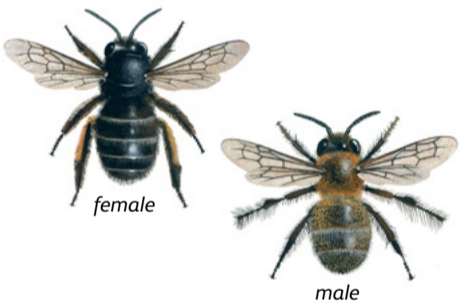
**Common carder bumblebee**  
*Bombus pascuorum*

- Tawny brown body
- Can be seen flying in November



**Tree bumblebee**  
*Bombus hypnorum*

- Ginger, black and white
- Can be found nesting in bird boxes



**Hairy-footed flower bee**  
*Anthophora plumipes*

- Black body and orange back legs
- Males are lighter in colour



**Tawny mining bee**  
*Andrena fulva*

- Nests in dry soil
- Makes volcano-like mounds of soil



**Red mason bee**  
*Osmia bicornis*

- Dense, gingery hair
- Likes to nest in mortar of old walls



**Leafcutter bee (Willughby's)**  
*Megachile willughbiella*

- Cuts neat semi-circles from leaves
- Large jaws

**Look out for these other pollinators**



**Bee fly**  
*Bombus terrestris*

- Very long proboscis
- High-pitched buzz



**Social wasp**

- Striped abdomen
- Makes nests from chewed wood



**Ashy mining bee**  
*Andrena cineraria*

- Ground-nesting
- Black with ashy band across thorax



**Wool carder bee**  
*Anthidium manicatum*

- Yellow markings down body
- Males have spines on the tail



**Hoverfly**

- Hovering and darting movement
- Large eyes

**friends of the earth**  
 see things differently

Download the app now  
 Search 'Great British Bee Count'

